



Project: _____

Item: _____

Quantity: _____

Date: _____

Models

- SPC-RTS-MF-28 - side station
- SPC-RTS-MF-36 - side station
- SPC-RTE-MF-28 - end station
- SPC-RTE-MF-36 - end station

Tray Stand
Molded Fiberglass (MF)

SPC-RTS-MF-28



- Add silverware and napkin wells to top for space-saving versatility.
- Easy to clean, low maintenance
- Labor saving mobility

Standard Features

- ✓ 30" Wide 14 Gauge Stainless Steel Top
- ✓ Molded Fiberglass Body
- ✓ 5" Casters

Top Options

- (AA) Cam Operated Line-up Locks
- Height Other Than Standard 36" (Specify ____)
- (TWE) Top Extensions (Width _____)
- (TLE) Top Extensions (Length _____)
- (LL) Silverware Wells With Inserts
- Napkin Pan
- (MR)#7 Hi-Lite Edge

Base Options

- (MM) Vertical Trim Strips
- (SS) Stainless Steel Legs
- Custom Body Color (Specify RAL # _____)
- S/S Toe Kick
- Other _____

Other Options

- Vinyl Graphic Wrap
- Body Decal
- Over-structure With Signage & Lights (Specify _____)

A.I.A. File No. 00-0-00

SIS No. 00-0-00

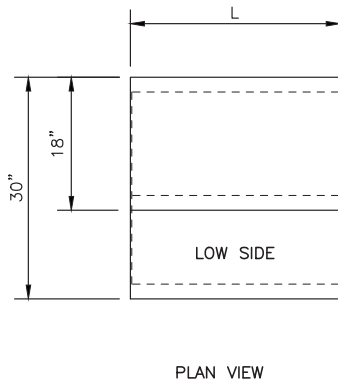
REV 3/28/24

Approvals: _____

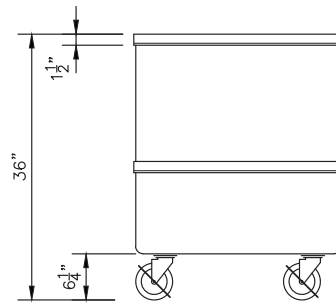
Tray Stand

Molded Fiberglass (MF)

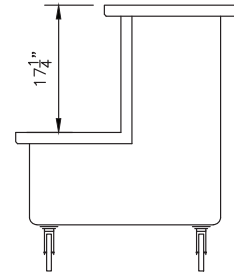
Tray Stand
Molded Fiberglass (MF)



PLAN VIEW

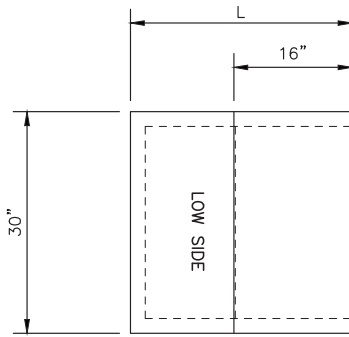


SIDE VIEW

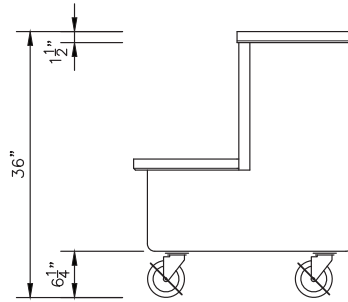


END VIEW

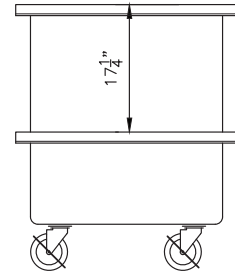
SPC-RTS-MF-28 / SPC-RTS-MF-36



PLAN VIEW



SIDE VIEW



END VIEW

SPC-RTE-MF-28 / SPC-RTE-MF-36

Model #	L	Approx. Ship Weight
SPC-RTS-MF-28	28 ^{3/8} "	205 lbs.
SPC-RTS-MF-36	36 ^{3/8} "	220 lbs.
SPC-RTE-MF-28	30"	205 lbs.
SPC-RTE-MF-36	38"	220 lbs.

Top

Top to be 30" wide and fabricated from a minimum of 14 gauge stainless steel with square turndown on all sides and corners fully welded, ground and polished. Top to have #4 satin finish.

Body (MF)

Body to be seamless molded fiberglass (F.R.P.) with smooth exterior surfaces and rounded corners. To be constructed by a hand lay-up process with four layers of 1.5 oz continuous strand fiberglass mat, plus a 24 oz layer of woven roving on the bottom for added strength. Fiberglass to be flame retardant per specification ASTM E-162 having a flame spread of

25 or less. Body interior to be reinforced at each end with 4 wide, 12 gauge galvanized channels welded to form integral U frame for maximum stress relief.

Casters

5" diameter, ball bearing, swivel type casters to be non-marking and with brakes on all wheels. Casters to be mounted thru two 12 gauge channels for extra rigidity.

We reserve the right to change specifications and product design without notice. Such revisions do not entitle the buyer to corresponding changes, improvements, additions or replacement for previously purchased equipment.

All equipment to be built in accordance with the Underwriters Laboratories, Inc. and the National Sanitation Foundation, Inc. standards and shall bear the Underwriters Laboratories, Inc. listing label for safety and the Underwriters Laboratories classification label for sanitation.

A.I.A. File No. 00-0-00

SIS No. 00-0-00

REV 3/28/24