



Project: _____

Item: _____

Quantity: _____

Date: _____

Models

- CP-RTS-MF-28 - side station
- CP-RTS-MF-36 - side station
- CP-RTE-MF-28 - end station
- CP-RTE-MF-36 - end station

Standard Features

- ✓ 14 Gauge Stainless Steel Top
- ✓ Molded Fiberglass Body
- ✓ 5" Casters
- ✓ Cam Operated Line-up Locks

Tray Stand
Molded Fiberglass (MF)

CP-RTS-MF-28



- Add silverware and napkin wells to top for space-saving versatility.
- Easy to clean, low maintenance
- Labor saving mobility

Specifications

Top
Top to be 30" wide and fabricated from a minimum of 14 gauge stainless steel with square turndown on all sides and corners fully welded, ground and polished. Top to have #4 satin finish.

Body (MF) - Body to be seamless molded fiberglass (F.R.P.) with smooth exterior surfaces and rounded corners. To be constructed by a hand lay-up process with four layers of 1.5 oz continuous strand fiberglass mat, plus a 24 oz layer of woven roving on the bottom for added strength. Fiberglass to be flame retardant per specification ASTM E-162 having a flame spread of 25% or less. Body interior to be reinforced at each end with 4 wide, 12 gauge galvanized uprights welded to support shelving to form integral U frame for maximum stress relief.

Options

- Top Options**
- Height Other Than Standard 36" (Specify _____)
 - (TWE) Top Extensions (Width _____)
 - (LL) Silverware Wells With Inserts
 - Napkin Pan
 - (MR) #7 Hi-Lite Edge

- Base Options**
- (MM) Vertical Trim Strips
 - (SS) Stainless Steel Legs
 - (TK) S/S Toe Kick

- Décor Options (Contact Factory)**
- Vinyl Graphic

A.I.A. File No. 00-0-00

SIS No. 00-0-00

REV 9/4/24



LTI, Inc.
1947 Bill Casey Parkway (888) 584-2722
Jonesboro, GA 30236 lowtempind.com

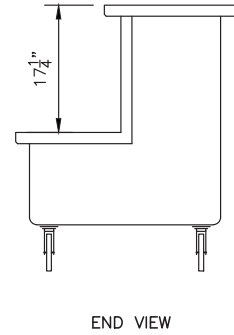
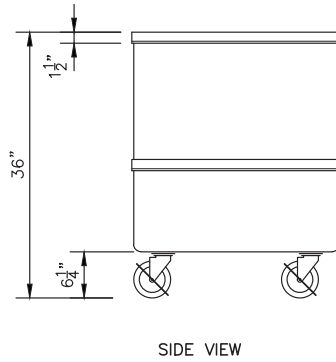
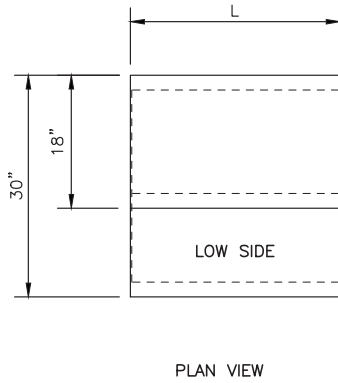
Approvals: _____

Tray Stand

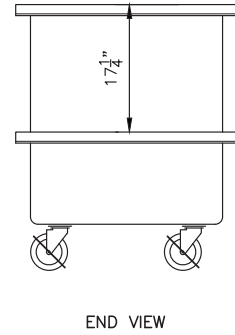
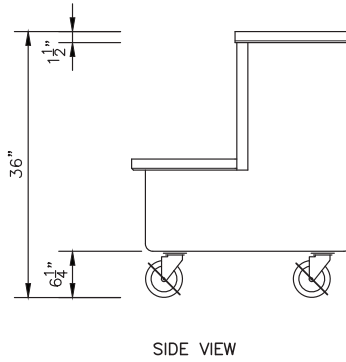
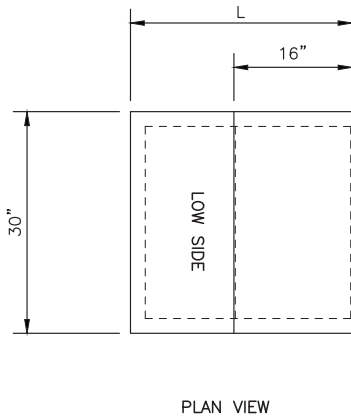
Molded Fiberglass (MF)



Tray Stand
Molded Fiberglass (MF)



CP-RTS-MF-28 / CP-RTS-MF-36



CP-RTE-MF-28 / CP-RTE-MF-36

Model #	L	Approx. Ship Weight
CP-RTS-MF-28	28 ^{3/8} "	205 lbs.
CP-RTS-MF-36	36 ^{3/8} "	220 lbs.
CP-RTE-MF-28	30"	205 lbs.
CP-RTE-MF-36	38"	220 lbs.

We reserve the right to change specifications and product design without notice. Such revisions do not entitle the buyer to corresponding changes, improvements, additions or replacement for previously purchased equipment.

All equipment to be built in accordance with the Underwriters Laboratories, Inc. and the National Sanitation Foundation, Inc. standards and shall bear the Underwriters Laboratories, Inc. listing label for safety and the Underwriters Laboratories classification label for sanitation.

REV 9/4/24

A.I.A. File No. 00-0-00

SIS No. 00-0-00

