



Project: _____

Item: _____

Quantity: _____

Date: _____

Models	Length
<input type="checkbox"/> CCSMT28	25 3/4"
<input type="checkbox"/> CCSMT36	33 3/4"
<input type="checkbox"/> CCSMT50	47 3/4"
<input type="checkbox"/> CCSMT60	57 3/4"
<input type="checkbox"/> CCSMT66	63 3/4"
<input type="checkbox"/> CCSMT74EQ	71 3/4"
<input type="checkbox"/> CCSMT74OF	71 3/4"
<input type="checkbox"/> CCSMT84EQ	81 3/4"
<input type="checkbox"/> CCSMT84OF	81 3/4"
<input type="checkbox"/> CCSMT96	93 3/4"

CCSMT Series - Multi-tier Display

CCSMT74EQ

- Tempered glass
- Hidden fasteners for clean look
- Adjustable glass without the use of tools

Specifications

CCSMT Models Crystal Clear Multi-tier Display come in standard lengths of 28", 36", 50", 60", 66", 74", 84" and 96" sizes. All glass provided is tempered 3/8" glass with pencilled edges and bumped corners. Tubular supports mount on the countertop with two screws through a solid plate on each leg.

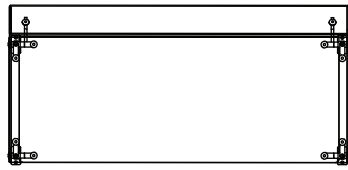
Options

- LED lights

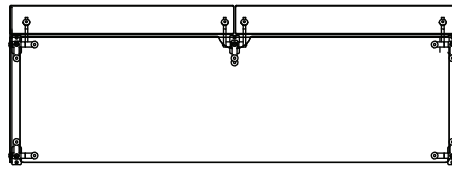
A.I.A. File No. 00-0-00

SIS No. 00-0-00

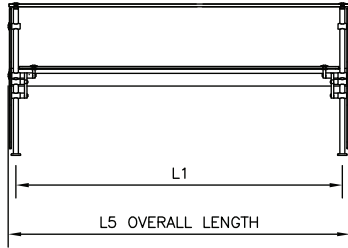
REV 4/26/24



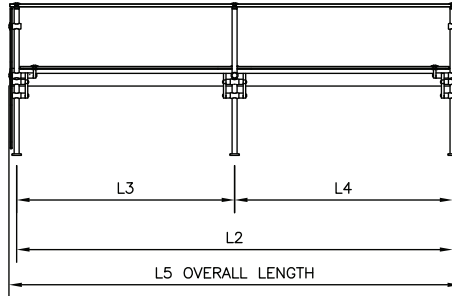
Top



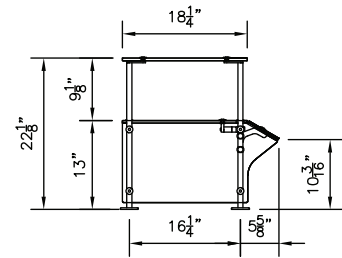
Top



Front



Front



Side

Model	Dimensions				
	L1	L2	L3	L4	L5 Overall Length
CCSMT28	25-3/4"	-	-	-	28"
CCSMT36	33-3/4"	-	-	-	36"
CCSMT50	47-3/4"	-	-	-	50"
CCSMT60	57-3/4"	-	-	-	60"
CCSMT66	-	63-3/4"	31-7/8"	31-7/8"	66"
CCSMT74EQ	-	71-3/4"	35-7/8"	35-7/8"	74"
CCSMT740F	-	71-3/4"	42-7/8"	28-7/8"	74"
CCSMT84EQ	-	81-3/4"	40-7/8"	40-7/8"	84"
CCSMT840F	-	81-3/4"	47-7/8"	33-7/8"	84"
CCSMT96	-	93-3/4"	46-7/8"	46-7/8"	96"

We reserve the right to change specifications and product design without notice. Such revisions do not entitle the buyer to corresponding changes, improvements, additions or replacement for previously purchased equipment.