



Project: \_\_\_\_\_

Item: \_\_\_\_\_

Quantity: \_\_\_\_\_

Date: \_\_\_\_\_

Models	Length
<input type="checkbox"/> CCDMT28	25 3/4"
<input type="checkbox"/> CCDMT36	33 3/4"
<input type="checkbox"/> CCDMT50	47 3/4"
<input type="checkbox"/> CCDMT60	57 3/4"
<input type="checkbox"/> CCDMT66	63 3/4"
<input type="checkbox"/> CCDMT74EQ	71 3/4"
<input type="checkbox"/> CCDMT74OF	71 3/4"
<input type="checkbox"/> CCDMT84EQ	81 3/4"
<input type="checkbox"/> CCDMT84OF	81 3/4"
<input type="checkbox"/> CCDMT96	93 3/4"

CCDMT Series - Multi-tier Display

**CCDMT74EQ**

- Tempered glass
- Hidden fasteners for clean look
- Adjustable glass without the use of tools

**Specifications**

CCDMT Models Crystal Clear Multi-tier Display come in standard lengths of 28", 36", 50", 60", 66", 74", 84" and 96" sizes. All glass provided is tempered 3/8" glass with pencilled edges and bumped corners. Tubular supports mount on the countertop with two screws through a solid plate on each leg.

**Options**

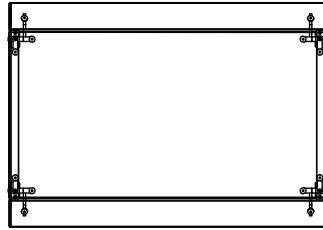
- LED lights

A.I.A. File No. 00-0-00

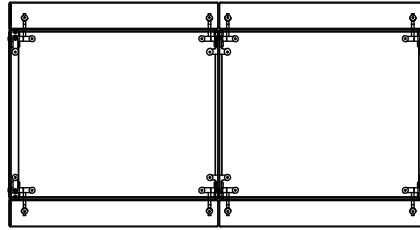
SIS No. 00-0-00

REV 4/26/24

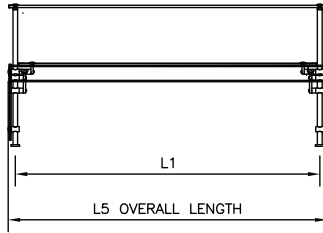
Approvals: \_\_\_\_\_



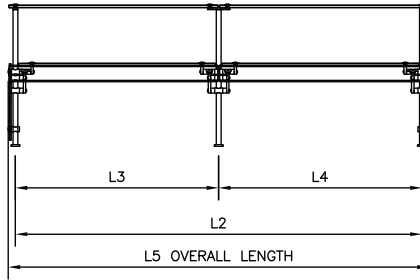
Top



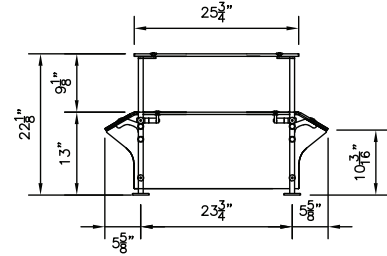
Top



Front



Front



Side

Model	Dimensions				
	L1	L2	L3	L4	L5 Overall Length
CCDMT28	25-3/4"	-	-	-	28"
CCDMT36	33-3/4"	-	-	-	36"
CCDMT50	47-3/4"	-	-	-	50"
CCDMT60	57-3/4"	-	-	-	60"
CCDMT66	-	63-3/4"	31-7/8"	31-7/8"	66"
CCDMT74EQ	-	71-3/4"	35-7/8"	35-7/8"	74"
CCDMT740F	-	71-3/4"	42-7/8"	28-7/8"	74"
CCDMT84EQ	-	81-3/4"	40-7/8"	40-7/8"	84"
CCDMT840F	-	81-3/4"	47-7/8"	33-7/8"	84"
CCDMT96	-	93-3/4"	46-7/8"	46-7/8"	96"

We reserve the right to change specifications and product design without notice. Such revisions do not entitle the buyer to corresponding changes, improvements, additions or replacement for previously purchased equipment.