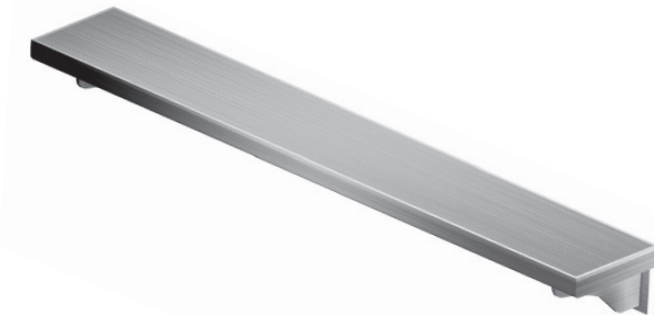




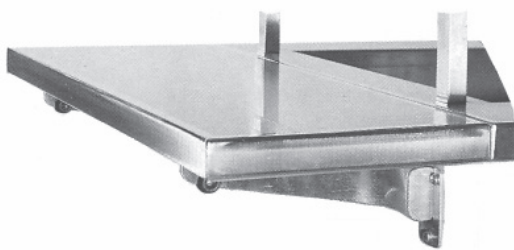
A. Beaded 10" tray slide to be 16 gauge stainless steel with two surface beads. Ends and side turned down square with all corners fully welded, ground and polished. To have #4 satin finish. Support brackets to be stainless steel fold down type.



B. Solid tray slide to be 16 gauge stainless steel. Ends and side turned down square with all corners fully welded, ground and polished. To have #4 satin finish. Support brackets to be stainless steel fold down type.



D. Work Shelf shall be 16 gauge stainless steel. 6" deep with edges turned down square and all corners fully welded, ground and polished. To have #4 satin finish. Support brackets to be stainless steel fold down type.



FF. End drop shelf to be 16 gauge stainless steel, 30" x 12" wide with edges turned down square and all corners fully welded, ground and polished. To have #4 satin finish. Support brackets to be stainless steel fold-down type.

REV 8/21/23