



SimplicitySeries utilizes in stock and ready-to-release components that have shorter lead times.

**Project:** \_\_\_\_\_

**Item:** \_\_\_\_\_

**Quantity:** \_\_\_\_\_

**Date:** \_\_\_\_\_

### Models

SIM-RTE-28 - End Station

### Standard Features

- ✓ 30" wide 14 gauge stainless steel top
- ✓ 5" Casters
- ✓ 36" A.F.F.
- ✓ Shipped fully assembled
- ✓ Cam operated line-up locks

SIM-RTE-28



U.L. Sanitation Classified to NSF Standards

- Easy to clean, low maintenance
- Labor saving mobility

## Specifications

**Top** - Top to be 30" wide and fabricated from a minimum of 14 ga. stainless steel with square turndown on all sides and corners fully welded, ground and polished. Top to have #4 satin finish.

**Body (MF)** - Body to be seamless molded fiberglass (F.R.P.) with smooth exterior surfaces and rounded corners. To be constructed by a hand laid process with four layers of 1.5 oz continuous strand fiberglass mat, plus a 24 oz layer of woven roving on the bottom for added strength. Fiberglass to be flame retardant per specification

ASTM E-162 having a flame spread of 25% or less. Body interior to be reinforced at each end with 4" wide, 12 gauge galvanized channels welded to form integral U frame for maximum stress relief.

**Body (LP)** - Standard grade laminate to cover all sides of an 18 gauge steel uni-body structure. Interior reinforced with 12 gauge galvanized uprights to support shelving and a 20 gauge steel bottom. Corners and bottom edge provided with 1/2" stainless steel trim strips.

**Body (SS)** - Uni-body structure, fabricated from 18 gauge stainless steel, welded ground and polished. Interior reinforced with 12 gauge galvanized uprights to support shelving and a 20 gauge steel bottom.

**Casters** - 5" diameter, ball bearing, swivel type casters to be non-marking and with brakes on all wheels. Casters to be mounted thru two 12 gauge channels for extra rigidity.

## Exterior Finishes

- Molded Fiberglass (MF)
- Stainless Steel (SS)
- Laminate over Galvanized (LP) Standard laminate finishes - consult factory for questions

REV 8/9/23



LTI, Inc.  
1947 Bill Casey Parkway (888) 584-2722  
Jonesboro, GA 30236 lowtempind.com

Approvals:

Molded Fiberglass (MF) or Laminate Panel (LP) or Stainless Steel (SS)

Tray Stand

A.I.A. File No. 00-0-00

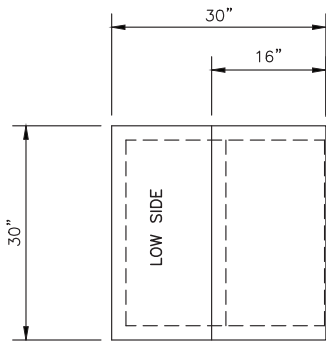
SIS No. 00-0-00

# Tray Stand

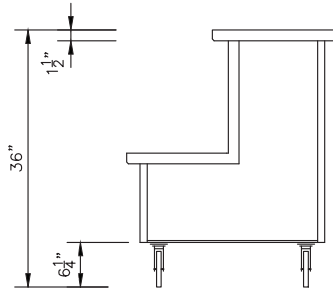
Molded Fiberglass (MF) or Laminate Panel (LP) or Stainless Steel (SS)



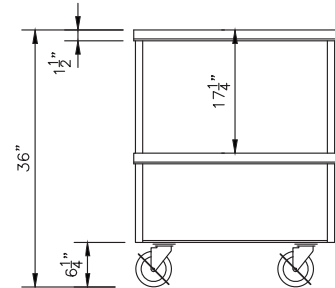
Tray Stand  
Molded Fiberglass (MF) or Laminate Panel (LP) or Stainless Steel (SS)



PLAN VIEW



LAMINATE OR SS BODY  
SIDE VIEW



LAMINATE OR SS BODY  
END VIEW

A.I.A. File No. 00-0-00

SIS No. 00-0-00

Model #	L	Approx. Ship Weight
SIM-RTE-28	28 <sup>3/8"</sup>	205 lbs.

We reserve the right to change specifications and product design without notice. Such revisions do not entitle the buyer to corresponding changes, improvements, additions or replacement for previously purchased equipment.

All equipment to be built in accordance with the Underwriters Laboratories, Inc. and the National Sanitation Foundation, Inc. standards and shall bear the Underwriters Laboratories, Inc. listing label for safety and the Underwriters Laboratories classification label for sanitation.

REV 8/9/23

LTI, Inc.  
1947 Bill Casey Parkway  
Jonesboro, GA 30236

(888) 584-2722  
lowtempind.com



**Changing**  
how food is served.™