

# Portable Sink

# Stainless Steel Self Contained Sink Unit

Stainless Steel (S)



**BUILT-IN HOT WATER HEATER!**

Project: \_\_\_\_\_

Item: \_\_\_\_\_

Quantity: \_\_\_\_\_

Date: \_\_\_\_\_

**Models**                      **Length**

SL-SCS3330                      33"

SL-SCS3330



U.L. Sanitation Classified to NSF Standards

- 5 gallon clean water tank
- 5 gallon waste water tank
- 20 amp cord and plug

- built in hot water heater
- soap dispenser

## Specifications

**Top** - 14ga Stainless Steel front rear and exposed end turned down against body as shown.

**Frame** - 1-1/2" x 1-1/2" x 1/8" Galvanized one piece Angle Frame - All welded construction - with built in supports to accommodate 4" diameter ball bearing swivel type caster.

**Body** - 18ga with 18ga stainless steel double pan hinged doors on stainless steel hinges provided with a positive latch.

**Equipment** - Unit designed as free standing hand washing station. Station is furnished with pump system, auto cut-off when tank is empty, and on off switch. This is tied inline with a hot water heater with entire system pulling from a 5 gallon clean water tank marked "fresh water". The "waste water" tank is 5 gallons. Entire system hooked together with braided plastic tubing. On the top of the unit is provided a faucet and soap dispenser with under counter reservoir.

## Options

- Finished stainless steel back
- Graphic wrap
- Hands free faucet
- Hands free soap dispenser
- Paper towel dispenser

Stainless Steel Self Contained Sink Unit  
Stainless Steel (S)

A.I.A. File No. 00-0-00

SIS No. 00-0-00

REV 4/29/20 - Printed in the U.S.A.



**Changing**  
how food is served.™

LTI, Inc.  
1947 Bill Casey Parkway      (888) 584-2722  
Jonesboro, GA 30236          lowtempind.com

Approvals: \_\_\_\_\_

# Stainless Steel Self Contained Sink Unit

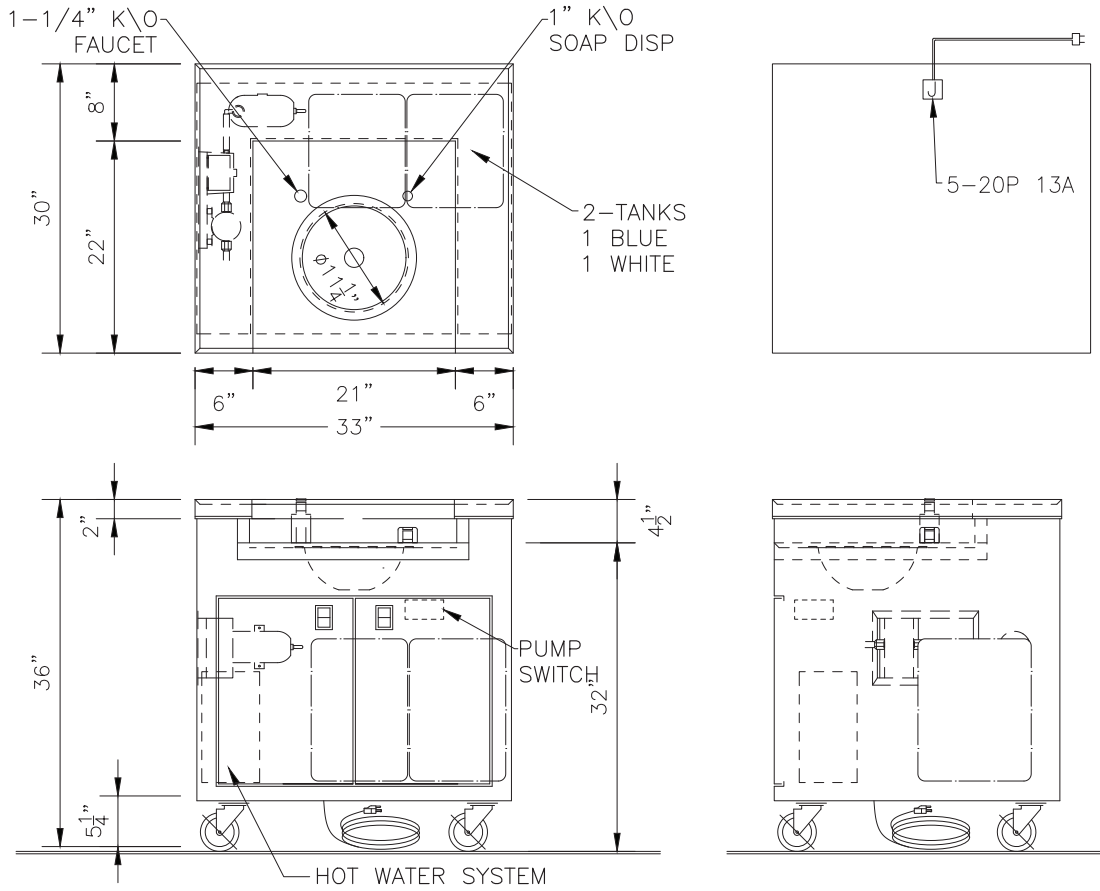
Stainless Steel (S)

# Portable Sink

Stainless Steel Self Contained Sink Unit  
Stainless Steel (S)

A.I.A. File No. 00-0-00

SIS No. 00-0-00



Model	Length	Width	Height	120V / 1 Phase		Shipping Weight
				Amps	Plug	
SL-SCS3330	33"	30"	36"	13	5-20P	350 lbs.

We reserve the right to change specifications and product design without notice. Such revisions do not entitle the buyer to corresponding changes, improvements, additions or replacement for previously purchased equipment.

All equipment to be built in accordance with the Underwriters Laboratories, Inc. and the National Sanitation Foundation, Inc. standards and shall bear the Underwriters Laboratories, Inc. listing label for safety and the Underwriters Laboratories classification label for sanitation.

REV 4/29/20 - Printed in the U.S.A.

LTI, Inc.  
1947 Bill Casey Parkway  
Jonesboro, GA 30236

(888) 584-2722  
lowtempind.com



**Changing**  
how food is served.™