



Project: \_\_\_\_\_

Item: \_\_\_\_\_

Quantity: \_\_\_\_\_

Date: \_\_\_\_\_

Models	Area
<input type="checkbox"/> DI-QSGT-28-G-H	616 sq/in
<input type="checkbox"/> DI-QSGT-42-G-H	924 sq/in

### DI-QSGT-42-G-H



U.L. Sanitation Classified to NSF Standards

- First of its kind speckled glass masks scratches
- Heated shelf to frost top with the flip of a switch
- Sanitary and easy-to-clean glass maximizes product merchandising

- New heat blanket technology ensures even heat across entire surface
- Low profile stainless flange sits flush with the counter

### Standard Features

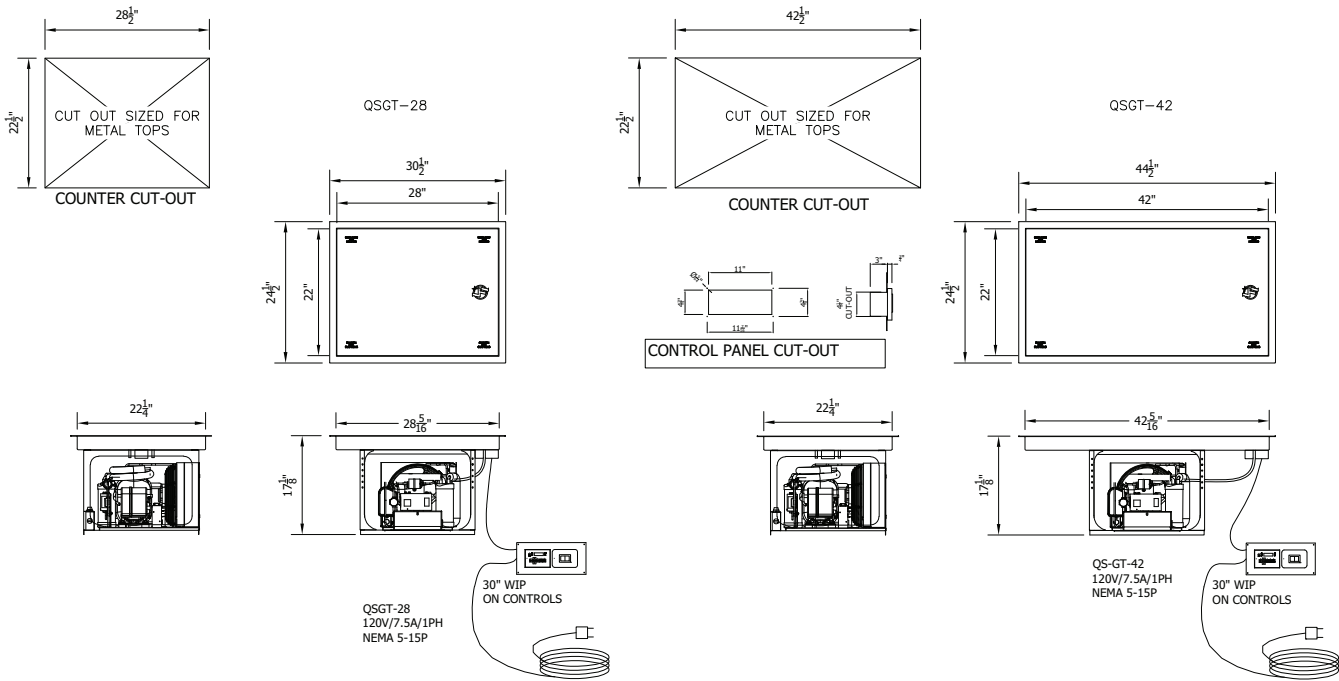
- ✓ Solid state digital controls
- ✓ On off lighted rocker switch for cold/frost mode
- ✓ 120V 7.5 amps
- ✓ ¼ inch ceramic glass – UL Recognized
- ✓ R449A HFO-based refrigerant
- ✓ 2 year parts and labor
- ✓ 5 year compressor warranty
- ✓ 1 piece 14ga welded stainless steel body

REV 5/15/24

Drop-in Ceramic Glass Shelf

A.I.A. File No. 00-0-00

SIS No. 00-0-00



Model	Width	Depth	Heated Area	Cut-Out Size	Control Panel Cut-Out Size	Amps (120V)	NEMA Plug	Refrigerant
DI-QSGT-28-G-H	31-1/4"	25-1/4"	616 sq/in	28-1/2" x 22-1/2"	4.25" x 11"	7.5	5-15P	R-499A
DI-QSGT-42-G-H	45-1/4"	25-1/4"	924 sq/in	42-1/2" x 22-1/2"	4.25" x 11"	7.5	5-15P	R-499A

**General Specifications**

Heated glass shelf to have food safe ceramic glass surface. Glass to be 1/4" thick and be UL recognized. 900watt (QSGT-42) or 600watt (QSGT-28) silicone heated blanket to be attached to 1/2" aluminum plate with high temperature adhesive. 1/2" aluminum plate to have embedded copper refrigeration lines inside of plate. Refrigeration plate and heating element to be incased in a heavy duty stainless steel framework and foamed with high density polyurethane foam. Unit to include a solid state digital controller for hot operation and lighted on off rocker switch for cold operation. Controller wiring to be half inch liquid tight non-metallic flex 36". Unit to be fully operational and ready to be installed and supplied with 10' long cord and plug. Unit to have a properly sized self-contained refrigeration system complete with controls and operate on R-449A (HFO) refrigerant. Unit to be UL listed and shall bear the UL classified EPH label.

Adequate ventilation must be provided to ensure proper operations of this unit. A minimum louvered opening of 14" x 14" with thru air flow is recommended. A minimum of 330 cfm air flow across the condensing unit area is recommended. Failure to provide adequate ventilation will void manufacturer's warranty. Customer side access is required for service of unit.

**Approval/Submittal (signature required)**

Model # \_\_\_\_\_

Compressor standard location is centered.

Adherence to LTI installation instructions is required.

Failure to do so may void the warranty.

Signature \_\_\_\_\_

Date \_\_\_\_\_

We reserve the right to change specifications and product design without notice. Such revisions do not entitle the buyer to corresponding changes, improvements, additions or replacement for previously purchased equipment.

All equipment to be built in accordance with the Underwriters Laboratories, Inc. and the National Sanitation Foundation, Inc. standards and shall bear the Underwriters Laboratories, Inc. listing label for safety and the Underwriters Laboratories classification label for sanitation.