

# Quick Switch Drop-in Ceramic Glass Shelf



**Project:** \_\_\_\_\_

**Item:** \_\_\_\_\_

**Quantity:** \_\_\_\_\_

**Date:** \_\_\_\_\_

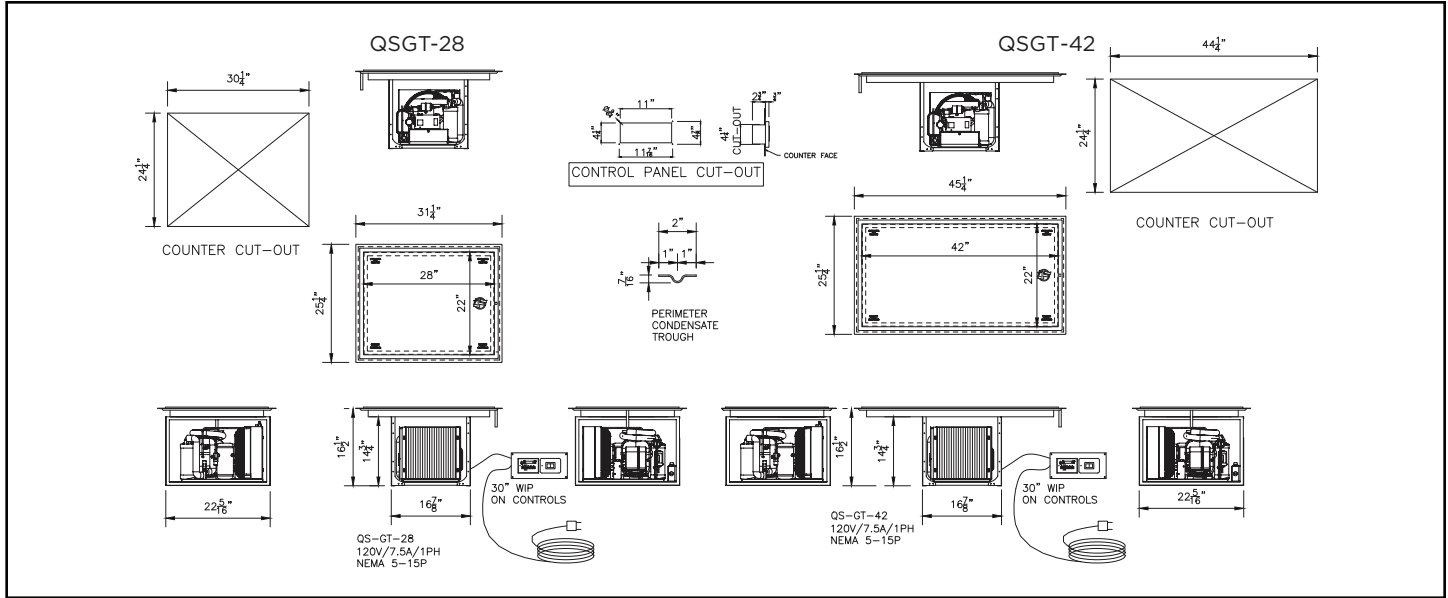
Models	Area
<input type="checkbox"/> QSGT-28	616 sq/in
<input type="checkbox"/> QSGT-42	924 sq/in

## Standard Features

- ✓ Solid state digital controls
- ✓ On off lighted rocker switch for cold/frost mode
- ✓ 120V 7.5 amps
- ✓ ¼ inch ceramic glass - UL Recognized
- ✓ R-507 (HFC) refrigerant

- ▶ First of its kind speckled glass masks scratches
- ▶ Heated shelf to frost top with the flip of a switch
- ▶ Sanitary and easy-to-clean glass maximizes product merchandising
- ▶ New heat blanket technology ensures even heat across entire surface
- ▶ Low profile 1 3/4 " stainless flange sits flush with the counter
- ▶ Gutter in flange allows drainage of condensation

# Quick Switch Drop-in Ceramic Glass Shelf



## Technical Specifications

Model	Width	Depth	Heated Area	Cut-Out Size	Control Panel Cut-Out Size	Amps (120V)	NEMA Plug	Refrigerant
QSGT-28	31-1/4"	25-1/4"	616 sq/in	30-1/4" x 24-1/4"	30-1/4" x 24-1/4"	7.5	5-15	R507
QSGT-42	45-1/4"	25-1/4"	924 sq/in	44-1/4" x 24-1/4"	44-1/4" x 24-1/4"	7.5	5-15	R507

## General Specifications

Heated glass shelf to have food safe ceramic glass surface. Glass to be 1/4" thick and be UL recognized. 600 watt silicone heat blanket to be attached to the underside of the glass with high temperature adhesive. Refrigerant tubing and heating element to be incased in a heavy duty stainless steel framework and foamed in place with high density polyurethane foam. Unit to include a solid state digital controller for hot operation and lighted on off rocker switch for cold operation. Controller wiring to be half inch liquid tight non-metallic flex 36". Unit to be fully operational and ready to be installed and supplied with 10' long cord and plug. Unit to have a properly sized self-contained refrigeration system complete with controls and operate on R-507 (HFC) refrigerant. Unit to be UL listed and shall bear the UL classified EPH label.

## Approval/Submittal (signature required)

Model # \_\_\_\_\_

Compressor standard location is right end (from control side).

Adherence to LTI installation instructions is required.

Failure to do so may void the warranty.

Signature \_\_\_\_\_

Date \_\_\_\_\_

We reserve the right to change specifications and product design without notice. Such revisions do not entitle the buyer to corresponding changes, improvements, additions or replacement for previously purchased equipment.

All equipment to be built in accordance with the Underwriters Laboratories, Inc. and the National Sanitation Foundation, Inc. standards and shall bear the Underwriters Laboratories, Inc. listing label for safety and the Underwriters Laboratories classification label for sanitation.