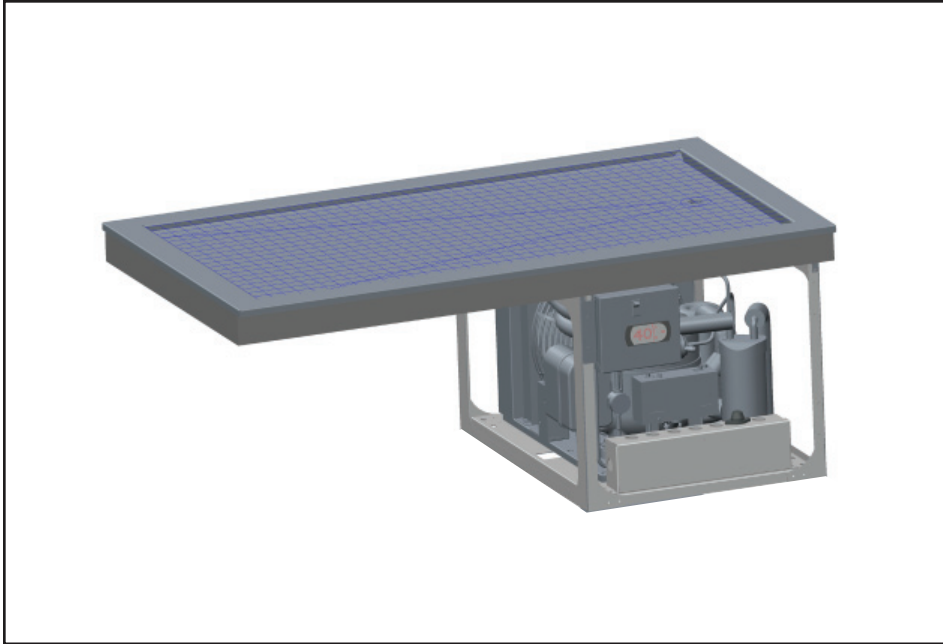


# Frost Top Drop-In



**Project:** \_\_\_\_\_

**Item:** \_\_\_\_\_

**Quantity:** \_\_\_\_\_

**Date:** \_\_\_\_\_

Models	Length
<input type="checkbox"/> DI-1826-CFT-T	30"
<input type="checkbox"/> DI-2025-CFT-T	29"
<input type="checkbox"/> DI-2038-CFT-T	42"
<input type="checkbox"/> DI-2051-CFT-T	55"
<input type="checkbox"/> DI-2064-CFT-T	68"
<input type="checkbox"/> DI-2077-CFT-T	81"

**Standard Features**

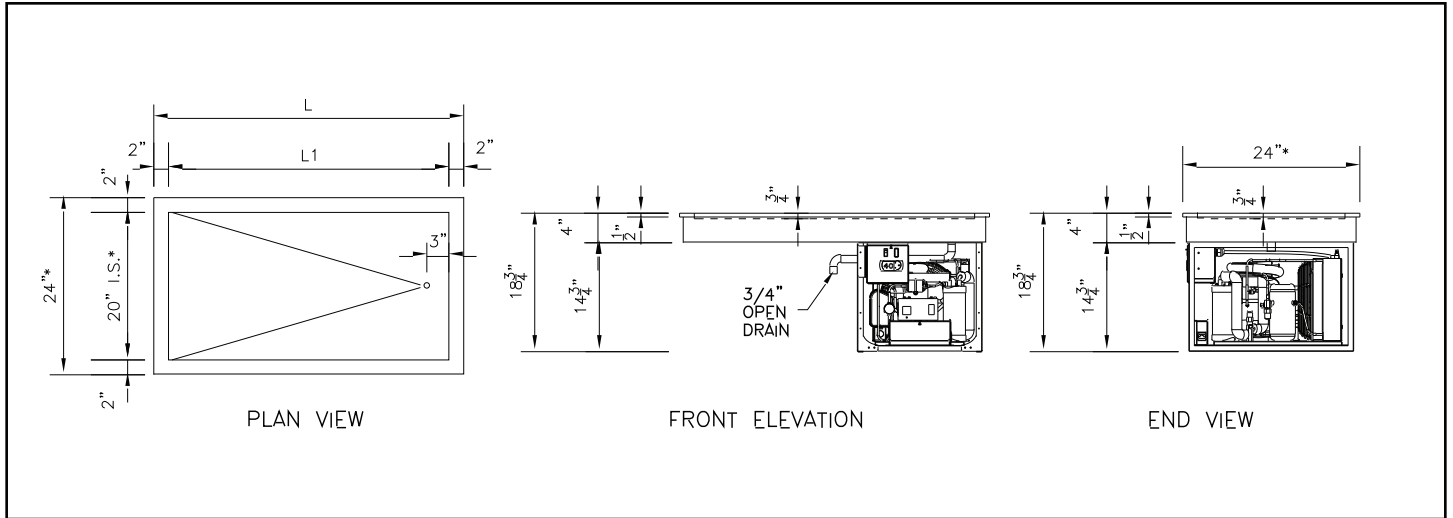
- ✓ Full sealing gasket
- ✓ 6 standard sizes
- ✓ 6' cord and plug
- ✓ 120V, 60, 1PH
- ✓ T-Turn down edge
- ✓ Plastic anti-freeze grate included

**Optional Features (specify)**

- Hugged edge (denote "H" in suffix)
- Skirt mounted control adapter (must specify)
- Other voltage, phase, cycle (specify \_\_\_\_\_)

- ▶ Use in high volume operations
- ▶ Perfect for use with portioned items
- ▶ Frost top maintains food temperature for up to 3 hours
- ▶ Sanitary easy to clean stainless surface
- ▶ Optional black ceramic glass surface in lieu of stainless

# Frost Top Drop-In



## Technical Specifications

Model	L	L1	Cut-out size	H.P.	Volts	Fans	Amps (120V)	NEMA Plug
DI-1826-CFT-T *	30"	26"	21 1/4" x 29 1/4"	1/3	120V/1	1	7.5	5-15
DI-2025-CFT-T	29"	25"	23 1/4" x 28 1/4"	1/3	120V/1	1	7.5	5-15
DI-2038-CFT-T	42"	38"	23 1/4" x 41 1/4"	1/3	120V/1	2	7.5	5-15
DI-2051-CFT-T	55"	51"	23 1/4" x 54 1/4"	1/3	120V/1	2	7.5	5-15
DI-2064-CFT-T	68"	64"	23 1/4" x 67 1/4"	1/3	120V/1	3	7.5	5-15
DI-2077-CFT-T	81"	77"	23 1/4" x 80 1/4"	1/3	120V/1	3	7.5	5-15

\* Note width of 18 O.A flange of 22

### Specifications

Frost top unit to be made up of a 14 gauge stainless steel watertight pan with a 5/8" recess around the perimeter. Unit to have a fully welded 2" flange with a 1/2" turn down (standard). Recess shall accommodate a removable washable grate to keep product from freezing to the pan.

To have a continuous refrigeration coil bonded to the underside, fully insulated with urethane insulation. To include a full perimeter breaker strip, and a 3/4" open brass drain extended to a shut-off valve below.

Temperature shall be maintained by a self-contained, fully-hermetic type R-134A condensing unit.

### Approval/Submittal (signature required)

Model # \_\_\_\_\_

Flange Edge Detail:

Turned (T) \_\_\_\_\_ Hugged (H) \_\_\_\_\_

(T) = 1/2" 90° turn down  
(H) = 14 gauge thickness

Compressor standard location is right end (from control side).

Adherence to LTI installation instructions is required. Failure to do so may void the warranty.

Signature \_\_\_\_\_

Date \_\_\_\_\_

We reserve the right to change specifications and product design without notice. Such revisions do not entitle the buyer to corresponding changes, improvements, additions or replacement for previously purchased equipment.

All equipment to be built in accordance with the Underwriters Laboratories, Inc. and the National Sanitation Foundation, Inc. standards and shall bear the Underwriters Laboratories, Inc. listing label for safety and the Underwriters Laboratories classification label for sanitation.