

# Super Cold Ice Cream Merchandiser

## **D R O P - I N S**

JOB \_\_\_\_\_ ITEM # \_\_\_\_\_

**MODEL# DI-2222-IC**

### **CAPACITY**

- 3.0 Cu. Ft.

### **STANDARD FEATURES**

- Full sealing gasket
- Two large compartments
- Two coated baskets
- Easy-lift see-thru lid
- 6' Cord and plug, 120 V, 60, 1Ph.
- Easy installation

### **OPTIONAL FEATURES**

- Extra coated baskets
- Lid locking assembly
- 2 Ventilation louvers for cabinet base (21-5/8"x19)

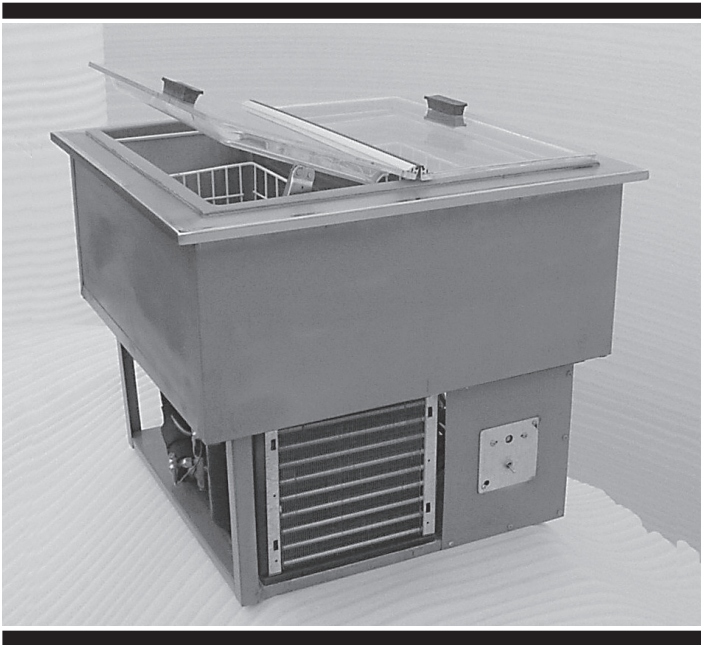
### **SHORT FORM SPECIFICATIONS**

Top perimeter frame to be constructed of 14 gauge stainless steel, welded, ground and polished, with a thermal break provided between the top and refrigerated interior. Interior pan to be 18 gauge stainless steel, fully welded, ground and polished. To be fully insulated with 1-1/2" to 2" urethane insulation. The exterior jacket to be constructed of 18 gauge galvanized steel. Baskets to be 10"x20"x6" deep, with sanitary white plastic coating.

Refrigeration system to be a hermetically sealed compressor operating on R-507 (HFC) refrigerant, and will include a cold wall partition between baskets. Thermostat controlled. All switches and controls to be fully accessible. Provide with 6' cord and plug.

Units to be UL listed and shall bear the UL and UL Sanitation seals.

*NOTE: Must have flow-through ventilation with louvers front and back*



### **PERFORMANCE:**

Low Temp's *Super-Cold* Ice Cream Merchandiser was developed to hold frozen ice cream and novelty products at a temperature of -10 degrees F. or less, in an ambient of up to 85 degrees F.

The design features a refrigeration system that utilizes a "full surround" cold air zone and includes a cold wall partition between the product baskets. Fully insulated, and provided with a 1/3 H.P. compressor, (R-507 HFC) the unit maintains proper temperatures without excessive frost build up.

The 'Drop-In' configuration provides a self contained design that allows for easy installation in any counter, serving line, cart or table.



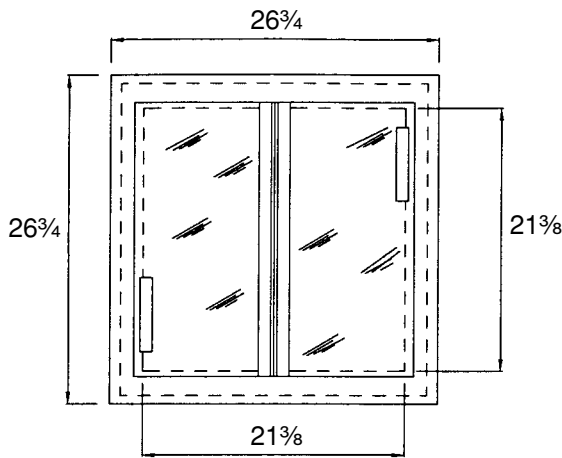
**U.L. Sanitation  
Classified to  
NSF Standards**



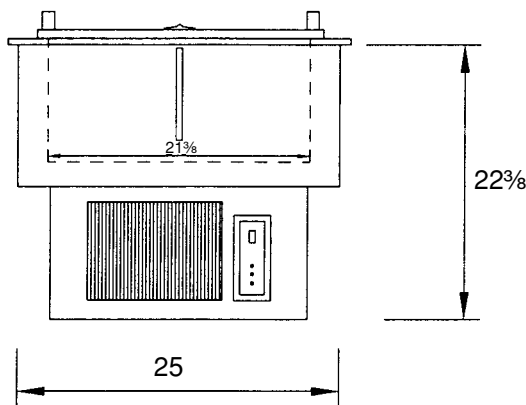
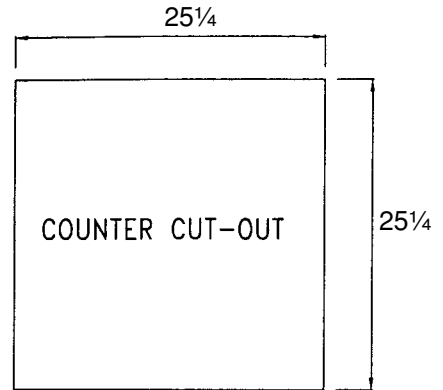
Low Temp Industries, Inc.  
P.O.Box 795, Jonesboro, GA 30237  
Phone 770 478-8803, Fax 770 471-3715

# Drop-In Ice Cream Merchandiser

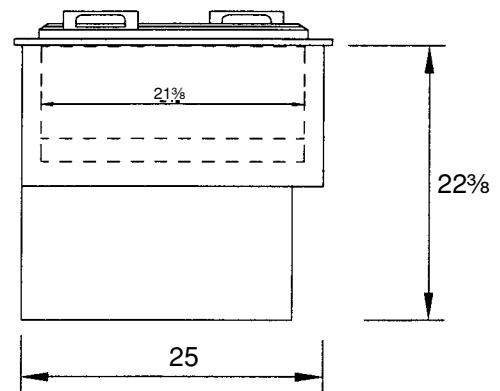
Thermostatically controlled, operates on R-507 (HFC) Refrigerant



TOP VIEW



FRONT VIEW



END VIEW

Model No.	NO. OF FULL SIZE BASKETS	CUT-OUT	H.P.	AMPS @120V	PLUG (NEMA)
DI-2222IC	2	25-1/4" x 25-1/4"	1/3	5.9	5-15

## Super Cold Ice Cream Merchandiser

This convenient 'Drop-In' design permits easy installation in any counter, serving line, cart or table. It is designed to be a merchandiser of frozen novelty products, and will hold -10 degrees F.

The stackable coated wire baskets provided are ideal for easy loading and display, and prevent product from freezing to the bottom of the unit. Extra baskets (optional) are recommended for storage in Walk-In Freezers so product can quickly be reloaded in the merchandiser.

*We reserve the right to change specifications and product design without notice. Such revisions do not entitle the buyer to corresponding changes, improvements, additions or replacement for previously purchased equipment.*



Low Temp Industries, Inc.  
P.O.Box 795, Jonesboro, GA 30237  
Phone 770 478-8803, Fax 770 471-3715